

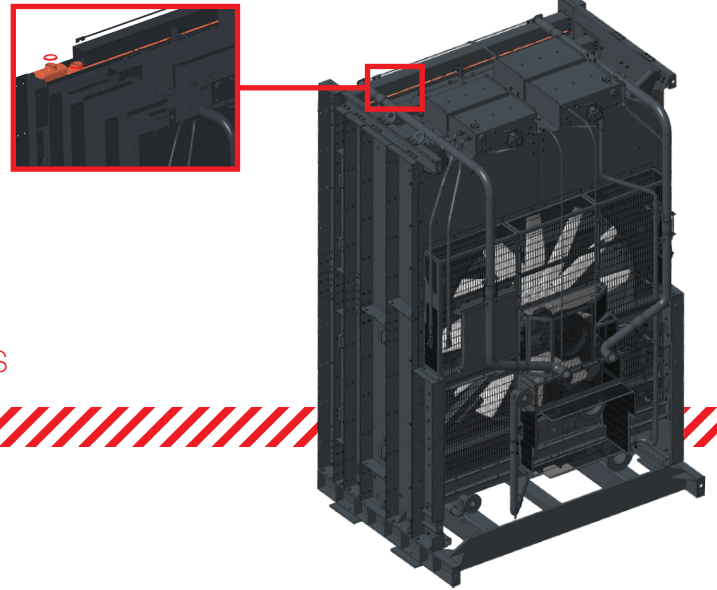


Industrial
Heat
Exchangers



Engine Cooling

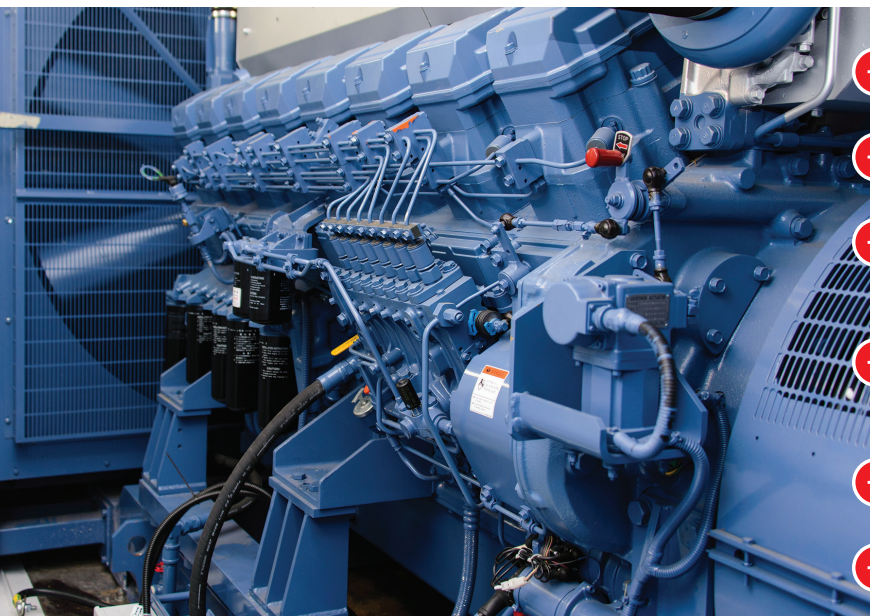
Bearward Sectional Core Radiators



**The #1 Lifecycle Cost Solution
for the Global Markets we Serve**

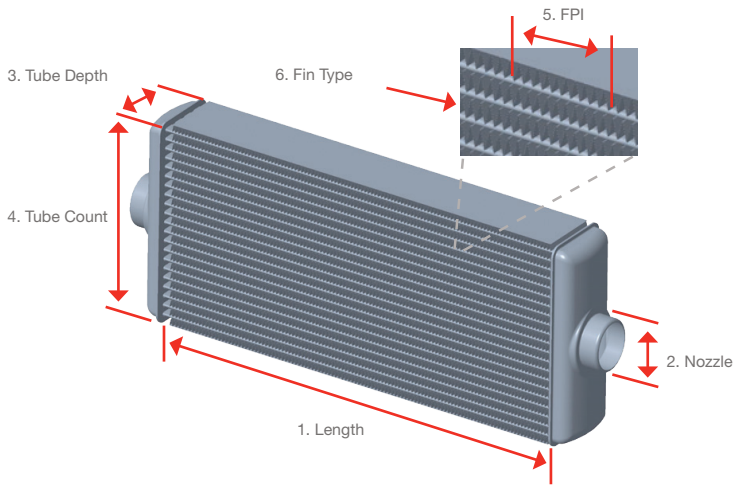
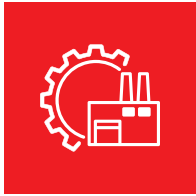
Bearward Engineering Sectional Radiators have been a preferred industry standard to Power Generation OE suppliers for over 15 years. Our patented sectional core provides quick and easy serviceability, class leading thermal performance and unrivaled durability.

- **Highly Durable** - reduction in strain through an innovative floating core design & rubber grommets that allow free thermal expansion & contraction
- **Easy Handling** - compact design simplifies assembly, storage & shipment across the globe
- **Extended Life Coatings** - protection available for corrosive environments



CUSTOMER BENEFITS:

- + **Thermal Performance** - OE part guarantees no loss in cooling performance
- + **Floating Core** - durable, no bolted gasket; reduces leak path & aids serviceability
- + **In Situ Core Removal / Replacement** - radiator assembly can remain on the engine; no lifting equipment needed
- + **Reduced Engine Downtime** - core sections are quick & easy to remove / replace, minutes rather than hours / days
- + **Maintenance** - sections can be removed & cleaned, extending life & performance
- + **Cost Effective** - single core sections can be replaced



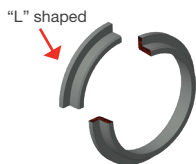
Example Part Identification:

1800 - 64 - 5 - 21 - 14 - LVR - BLY - CPR
 ↑ ↑ ↑ ↑ ↑ ↑ ↑ ↑
 Length Nozzle Tube Tube FPI Fin Type Treatment Material
 Depth Count

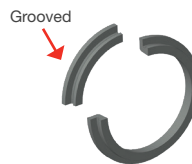
Item #	Characteristic	Description	Available Options
1	Length	Specify distance between headerplates	0700mm to 2200mm (100mm increments only)
2	Nozzle	Specify diameter of the hole	64mm or 83mm
3	Tube Depth	Specify # of rows	2 to 6
4	Tube Count	Specify # of tubes across	20 or 21
5	Fins per Inch (FPI)	Specify # of fins per inch	10 to 16
6	Fin Type	Select type of fin used	LVR = Louvred, NON = Non-Louvred
N/A	Treatment	Select core finish, protection	BLK = Standard, ELT = Electro Tined, BLY = Blygold
N/A	Material	Select material option	CPR = Copper Brass, ALU = Aluminum, CUP = Cuprobraz®

Seal Part #	Circuit Type	Temperature	*ID	Profile	Additional Notes
BE6400002800	Charge Air	Up to 250°C	~74mm	"L" shape	Flexible
BE6400009300	Charge Air	230°C to 280°C	~74mm	"L" shape	Steel Reinforced (requires insert tool*)
BE6400003300	Coolant	N/A	~74mm	Grooved	Flexible
BE6400005000	Coolant	N/A	~55mm	Grooved	Flexible

*Insert Tool Part #2900245700



- Seal Part #'s 6400002800 & 6400009300
- For Charge Air Circuits
- "L" shaped profile



- Seal Part #'s 6400003300 & 6400005000
- For Coolant Circuits
- Grooved profile

To learn more about what Bearward Engineering Sectional Radiators can do for you, contact:

North America Sales Office
Young Touchstone
 Oak Creek, WI USA
 (414) 768.7420
 wabtec.com
 email: youngtouchstonesales@wabtec.com

European Sales Office
Bearward Engineering
 Northampton, NN4 8HU U.K.
 +44 1604.762.851
 wabtec.com
 email: ben_sales@wabtec.com

Aftermarket Sales
G&M Radiator
 Glasgow, G40 2TA U.K.
 +44 141 550 5800
 gm-radiator.com
 email: sales@gm-radiator.com